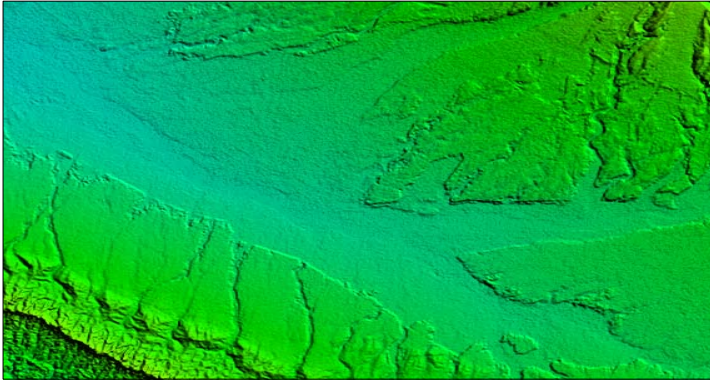


## Multi-sensors data processing for snow and avalanche study – DRDO, India



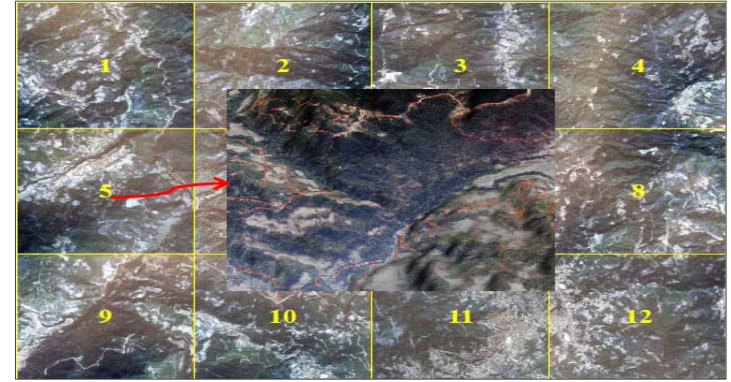
Input data: Cartosat-1 stereo ortho-kit, Cartosat 2-PAN, LISS-IV

Area covered: 1,41,804 km<sup>2</sup>

Project deliverables:

- DEM at 10-meter point spacing
- Ortho imagery at 2.5 -meter and 1-meter resolution
- Pansharpened multi resolution and multi sensor image
- Slope- Aspect map
- Cartographic contour
- Customized spatial model

## Digital base map preparation – DRDO, India



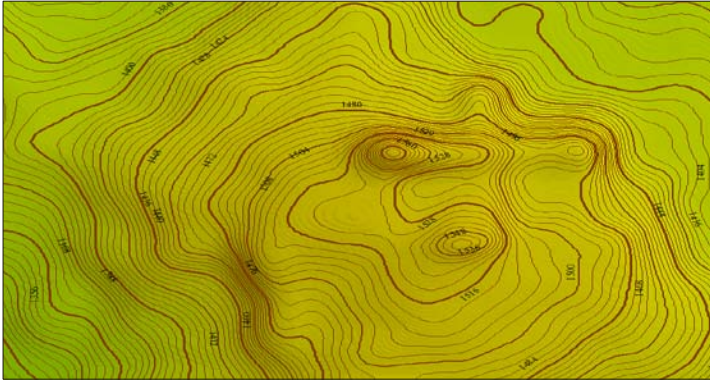
Input data: RADARSAT-2, Cartosat-1, LISS-IV

Area covered: 2,67,000 km<sup>2</sup>

Project deliverables:

- DEM at 5,10-meter point spacing
- Toposheet map at 1:50,000 scale
- Customized Geo- Visualization software
- 3D flythrough model
- Fused imagery and Elevation data
- Geo-database

## High resolution stereo satellite elevation mapping- Kohima



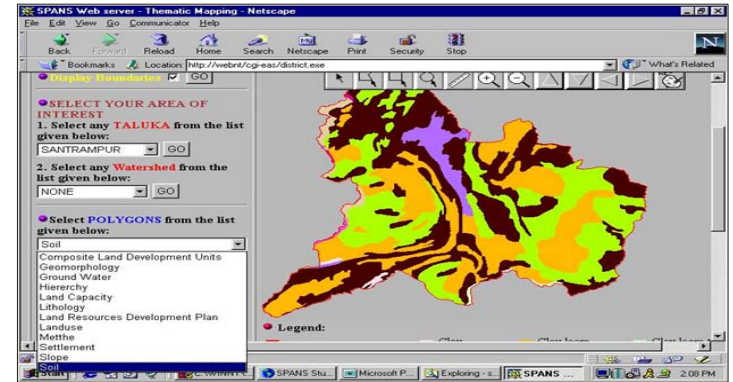
Input data: WorldView-2 stereo image

Area covered: 382 km<sup>2</sup>

Project deliverables:

- DEM at 1-meter point spacing
- Pansharpened ortho image at 0.5 –meter resolution
- Cartographic contour

## Web based geo-data hosting– Gujarat



Input data: Existing land information data

Area covered: 8,866 km<sup>2</sup>

Project deliverables:

- Customized geo-statistical tools
- Geo-database
- Web-interface and layer architecture

## Water Body mapping -WestBengal



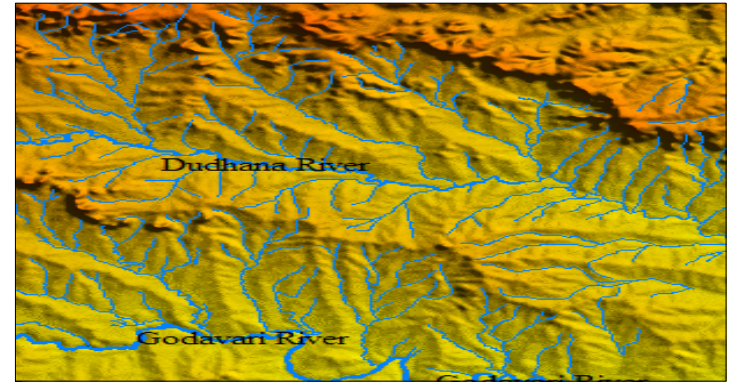
Input data: QuickBird

Area covered: 20,360 km<sup>2</sup> approx.

Project deliverables:

- Pansharpned image
- Thematic map at 1:10,000 scale
- Land cover database

## Drainage network mapping– Maharashtra



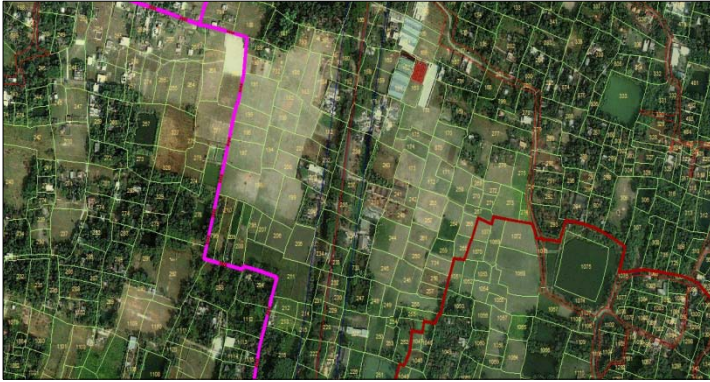
Input data: Cartosat-1, LISS-IV

Area covered: 26,244 km<sup>2</sup>

Project deliverables:

- Ortho image
- Thematic map at 1:50,000 scale

## Land cover database - Kolkata



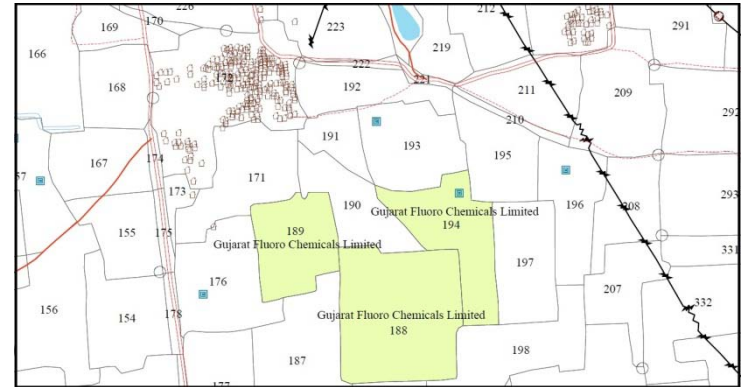
Input data: QuickBird, Survey data

Area covered: 80 km<sup>2</sup>

Project deliverables:

- Mosaic image
- Land use land cover map at 1:10,000 scale

## Wind force project – Tamilnadu, India



Input data: ASTER, QuickBird ,Google, Survey data

Area covered: 700 km<sup>2</sup> approx.

Project deliverables:

- Site topographic data
- Land use land cover map at 1:25,000 scale
- Strategic features
- Suitability map

## Soil resource based land use map –Maharashtra, Madhya Pradesh



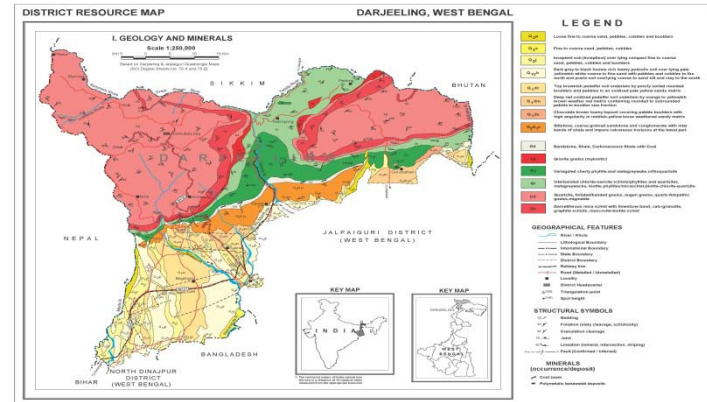
Input data: Landsat ETM+, LISS-III, Survey data

Area covered: 7,718 km<sup>2</sup>

Project deliverables:

- Soil quality map at 1:50,000 scale
- Crop suitability map at 1:50,000 scale
- Land capability map at 1:50,000 scale

## Geological atlas– Odisha, Bihar, Meghalaya



Input data: Survey data

Area covered: 38 district maps under Bihar, Jharkhand, Odessa, West Bengal & Meghalaya state.

Project deliverables:

- Geological map at 1:50,000 scale